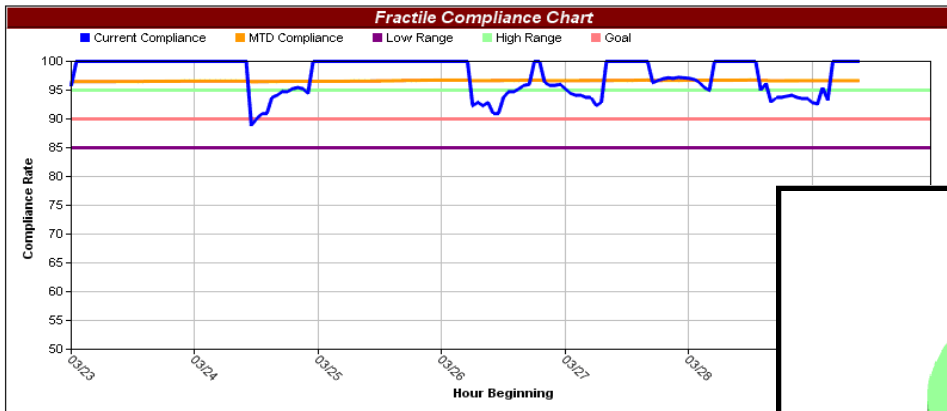
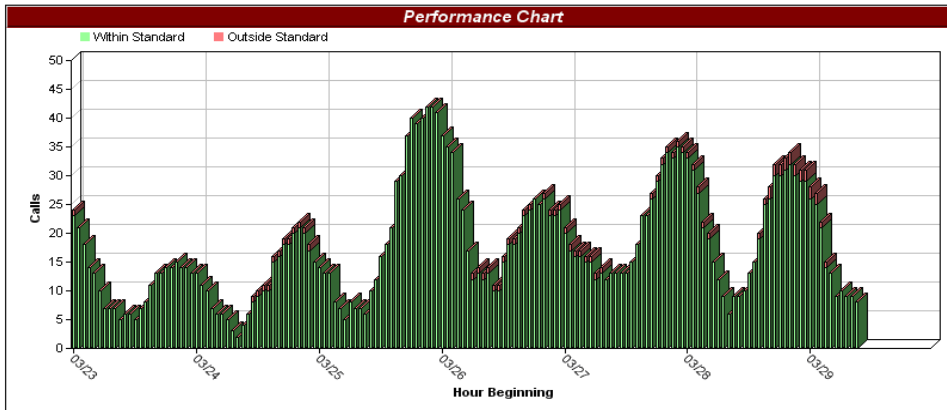




### Time on Task GraphIt Summary

Graphs represent in queue, active or completed calls between the hours of 3/28/2008 9:43:59 PM and 3/29/2008 9:43:59 AM.  
Performance Standard = 02:00:00



## Time-On-Task Compliance

Agencies today are interested in real-time monitoring of time-on-task or time-on-scene. User defined criteria can be specified by various types of calls. For example, there may be an interest in measuring time-on-scene from time of patient contact for all cardiac related incidents as part of a cardiac research study. Automatic notifications can be generated for all units that fall outside of the designated response time goal.

