



## Flu Activity Continues to Increase

Twenty-five states are now reporting widespread levels of activity, up from 10 the previous week and further increases are expected.

The CDC is reporting a significant increase above baseline for patients seeking care with complaints of influenza like illness (ILI) with twenty states experiencing high **ILI activity**, an increase from six states last week.

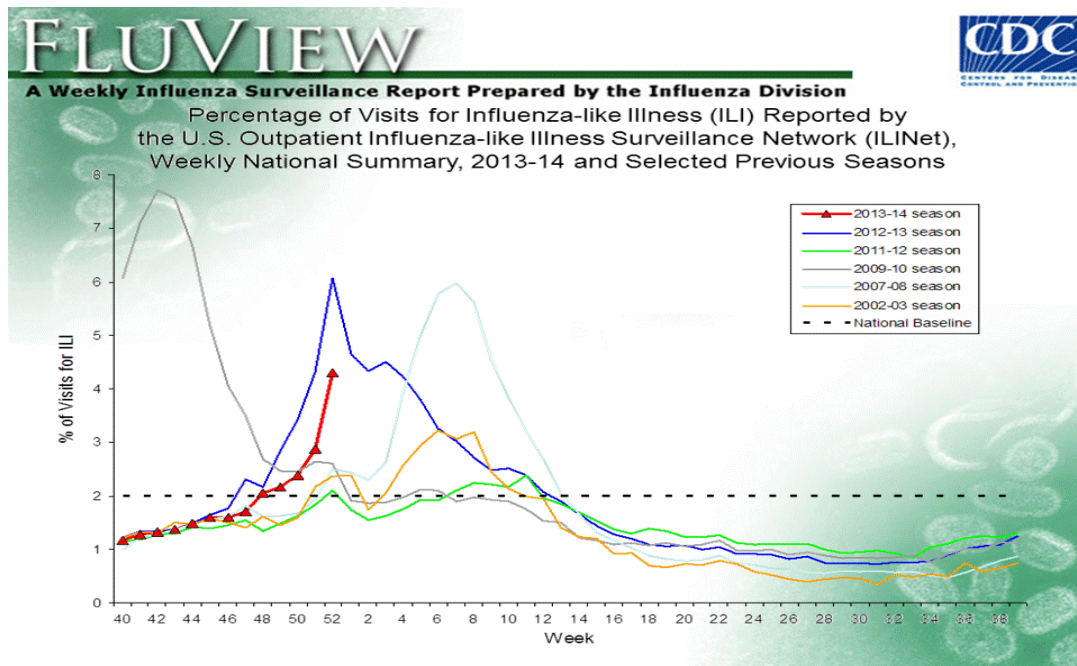
Eight states and New York City experienced moderate ILI activity and six states experienced low ILI activity. Sixteen states reported minimal ILI activity.

Despite the increase in ILI, the **proportion of deaths** attributed to pneumonia and influenza decreased this week, and remains below the epidemic threshold.

Two **influenza-associated pediatric deaths** were reported during the latest reporting period making a total of six influenza-associated pediatric deaths in the 2013-2014 season.

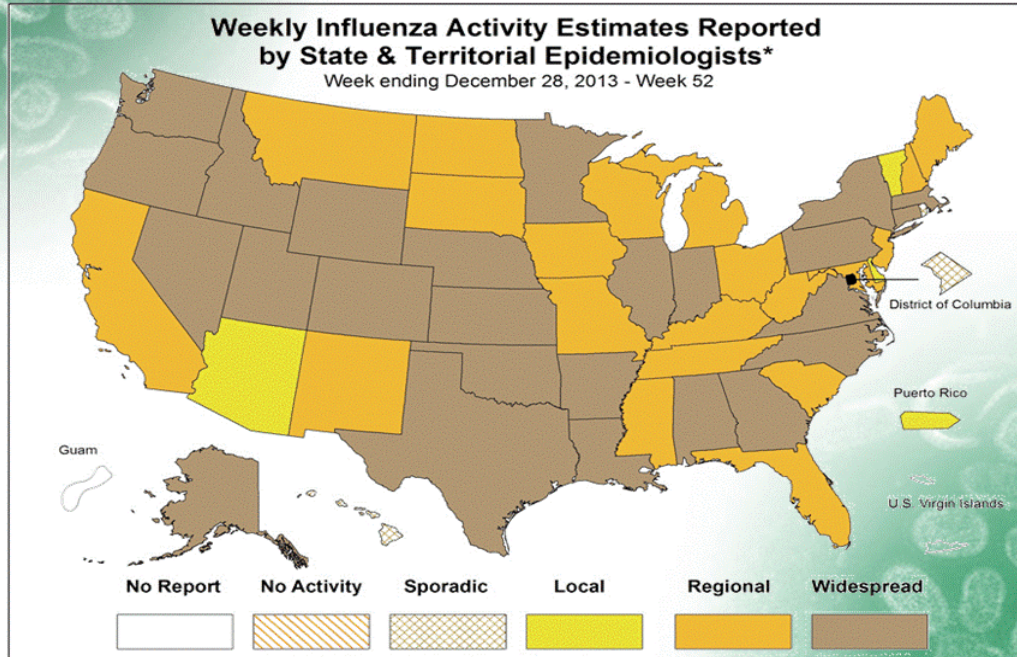
Nationally, the percentage of **respiratory specimens** testing positive for influenza viruses in the United States increased to 26.7%. Nearly all (99%) of these samples have been influenza A (H1N1) which is contained within the seasonal flu vaccine.

Antivirals, including Oseltamivir and zanamivir are recommended for this season with about 1.1% resistant to oseltamivir and none resistant to zanamivir.



# FLUVIEW

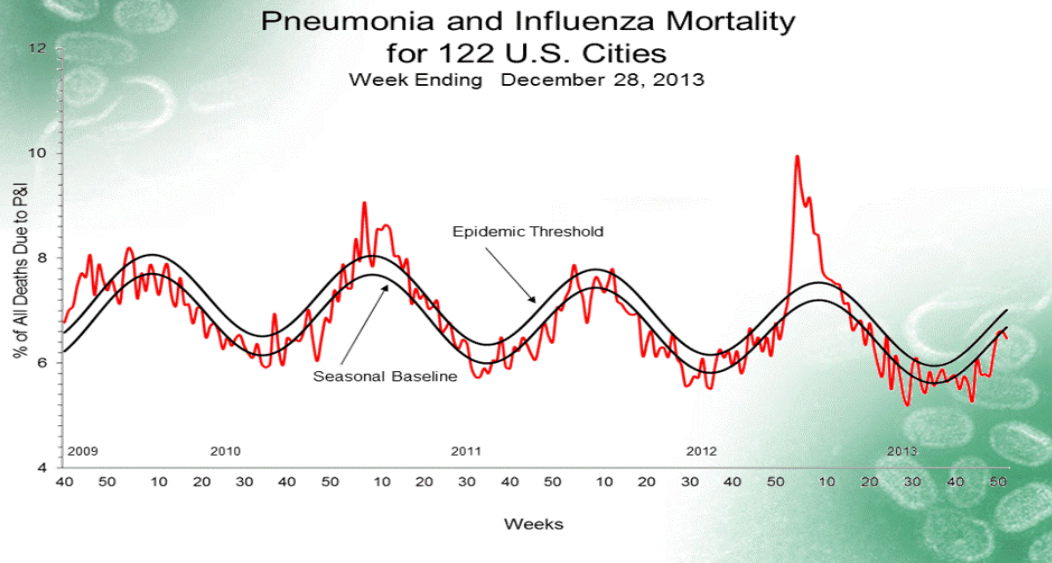
A Weekly Influenza Surveillance Report Prepared by the Influenza Division



\* This map indicates geographic spread & does not measure the severity of influenza activity

# FLUVIEW

A Weekly Influenza Surveillance Report Prepared by the Influenza Division

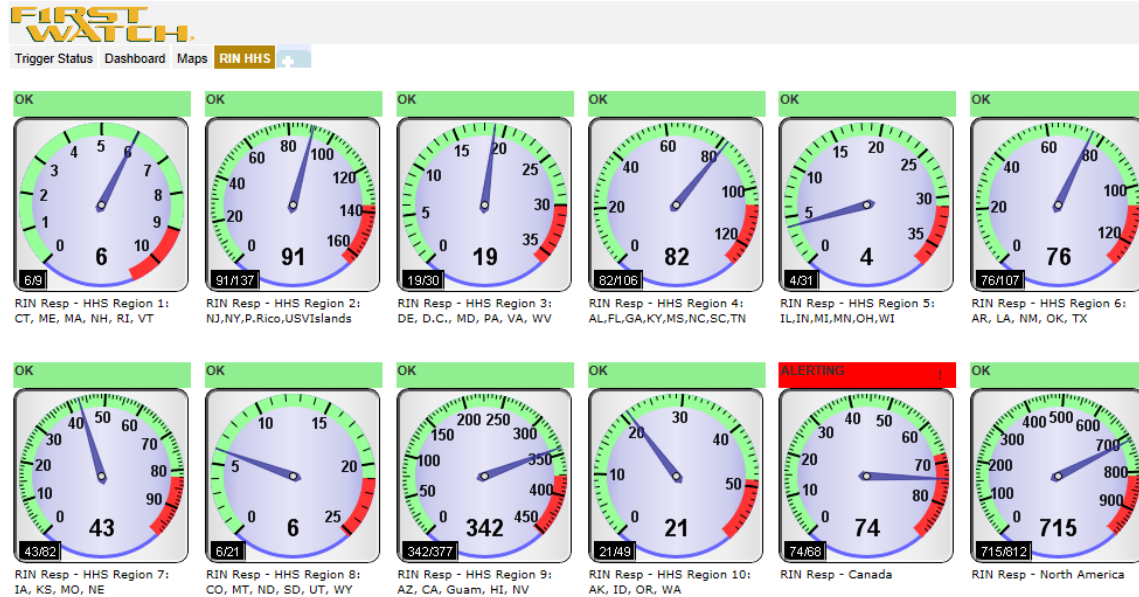




## FirstWatch's Regional Influenza Network (RIN)

The 65 US and Canadian FirstWatch customers in the RIN (mostly EMS, but a few hospitals and 1 poison center), are experiencing somewhat increased call volume (above pre-flu season) this flu season, with a few trigger alerts (mostly in Respiratory triggers), but compared to previous years where H1N1 was not the predominant strain, we are seeing lower than normal flu season increases.

Our Canadian RIN members seem to be having a slightly higher rate of alerts than most US RIN members, but still not higher than a typical non-H1N1 flu season.



## EMS & Public Safety Agency Recommendations

EMS Systems should continue active surveillance of flu within their communities since there are wide ranges of activities. Some areas will see higher activity and severity than others.

So far this season, the area to watch are our own workforce, as many are in the young and otherwise healthy group that seems most likely to get (and spread) H1N1 based flu. Due to this, higher volume of flu call activity isn't likely to be an issue in most places, but rather the potential for workforce illness and absenteeism, especially where vaccination rates are low.

Active hand washing, use of Personal Protective Devices, including masks and gloves should be encouraged when treating suspected influenza patients.

For more information, visit:

[www.firstwatch.net/flu-proofing-your-agency-or-community/](http://www.firstwatch.net/flu-proofing-your-agency-or-community/)

This document is provided by FirstWatch as a service to prehospital and public health providers. The information has been compiled from a variety of sources such as the CDC, Health Canada and WHO. It is copyrighted, but may be freely copied and distributed as long as it remains intact. [www.firstwatch.net](http://www.firstwatch.net)