

Interact with data visualizations, displayed your way

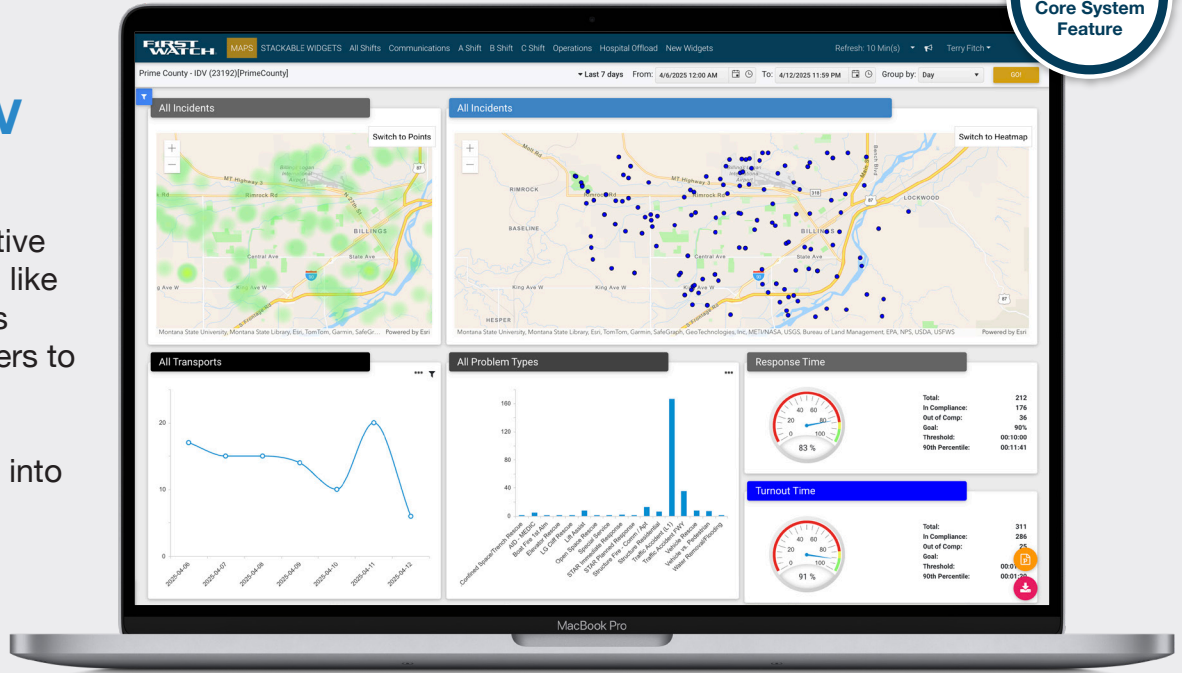


IDV

What does IDV stand for?

IDV stands for Interactive Data Visualization and like the name suggests, its intended to enable users to create dashboard visualizations offering interactive drill-downs into their FirstWatch data.

➤ More FAQs on the next two pages.



Manatee County EMS Customer Spotlight

“We use IDV to communicate with our hospital partners daily. We provide them with data that showcases their Transfer of Care times, Nurse Signature Times for Transfer and Volume. This helps us have a continual pulse on their performance as it relates to getting our units turned around at their facilities.

We also use IDV to provide senior leadership within our organization a view of how our system is performing. Some of the most desired data is presented to them through IDV to quickly show trends in our teams performance.”



Sean Dwyer
Assistant Chief, Special Operations
Manatee County EMS

What is IDV?

IDV is a module with a modernized look and feel designed to allow users to interact with the data that is populated from a FirstWatch trigger. Users can create and save an unlimited number of widgets or tabs to display data in a manner that is meaningful to them and their organization.

Once designed, IDV allows users to answer common questions about what may be going on in their system. IDV supports the ability for users to search or filter data and save custom filters for each user profile to be used at a later time.

IDV provides the ability to group multiple data elements and compare to previous day, month, or year. Interval breakdowns can include day of week, hour of day, by station, unit, shift, battalion or other options important to your organization.

Access to the data at your finger tips on screen or multiple export options are part of the core feature set. All widgets can be exported in various formats to add to your reports. The IDV Grid allows the end user to group by, hide or sort columns, reorder the data columns, apply filters just to the grid and if needed export to Excel.

How would it help my organization?

IDV helps organizations setup and see information at a glance in an easy-to-read visual display. IDV can be shared to other individuals within your organizations or entities that you report to. Because information can be exported out, many agencies use IDV to assist in reporting or providing information in an easy-to-understand manner for authorities, councils, etc.

What type of data does IDV look at?

The majority of clients using IDV are using CAD or ePCR data, but IDV can be setup against any data source you have flowing to a trigger in FirstWatch – CAD, ePCR, ProQA, RMS, or a combination of data sources.

Do you have a standard template / setup you can just copy over and setup for me?

During the initial kick off call, FirstWatch will provide examples of what IDV can do, share examples of what some other clients have built, show you how to build a few widgets and get a sense of how IDV may help.

FirstWatch will then review your triggers with your team to determine which trigger will be the best fit to accomplish your goal. FirstWatch may suggest adding additional data elements to enhance your trigger to meet your desired IDV vision.

Next, FirstWatch will copy what is built for your personal IDV for you to test and review settings and get used to the data. If you prefer, you can create your own IDV layout and test that. FirstWatch is happy to help you get started and guide you through the steps of how-to setup widgets and filters until you are comfortable to do this on your own. It may take a few sessions for some people.

Once you have your IDV setup, FirstWatch can clone one or more tabs to other users as you determine so they do not have to re-create their own setup. Those users can then modify their own IDV filters if authorized to do so.



Cypress Creek EMS Customer Spotlight

“FirstWatch IDV gives administrators the ability to view response data in a clear and concise report. We share this data with the various fire departments we provide emergency communications services saving my Communications Manager three days of work.”



Wren Nealy Jr.
Chief Executive Officer
Cypress Creek EMS

➤ FAQs continued

How many widgets can I have?

The IDV Setup Tool allows you to create an unlimited number of widgets, however, one should be aware of the display and what would be presented on screen. Depending on the type of widget (Tile vs Chart), about 6-9 widgets fit nicely on the screen without the user having to scroll to see the additional information.

Alternatively, you can create additional tabs for displaying and grouping specific types of information such as by discipline, response times, different departments, different audiences.

Can I move my “widgets” around?

Yes, in IDV Setup, the widgets can be arranged in any way you would like.

How do I get it?

One IDV, per agency, is included with your core system, and can be applied to any trigger.

Contact your regional sales manager for additional information.



Real-Time data from your CAD, ProQA, ePCR, RMS, Phone, Nurse Triage, Billing, or Hospital ED systems



Dashboards



Mobile App



Triggers



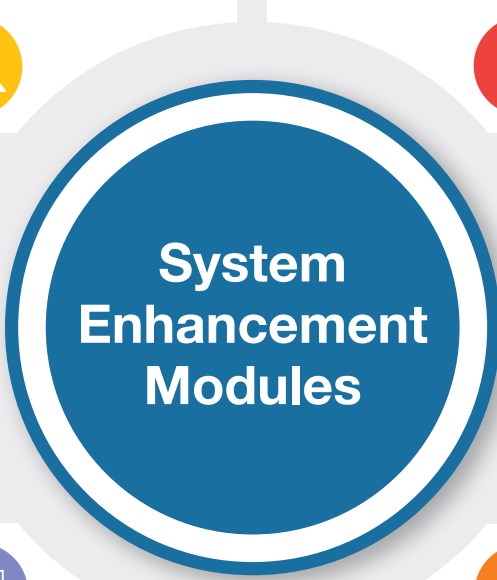
ESRI Maps



Alerts



Interactive Data Visualization (IDV)



FirstPass®
(Over 22 Million
Records Processed)



Fire Operations
Analytics/Accreditation
Module (FOAM)



Risk Identification
for Emergency
Services (RIDES)



Online Compliance
Utility (OCU)



Performance
Plus



Demand Analysis



Custom Reports



Transfer
of Care
(TOC)



Hospital
Status
Dashboard



Academy
Analytics™



Stand
Alone
Products

Resource
Planner™



ASK US ABOUT

Our NEW
AI Capability

About FirstWatch

FirstWatch helps public safety and healthcare professionals serve their communities through the use of technology and the science of quality improvement. Drawing on deep experience in emergency services, the FirstWatch team develops software and personalized solutions for over 500 communities across North America. FirstWatch.net

